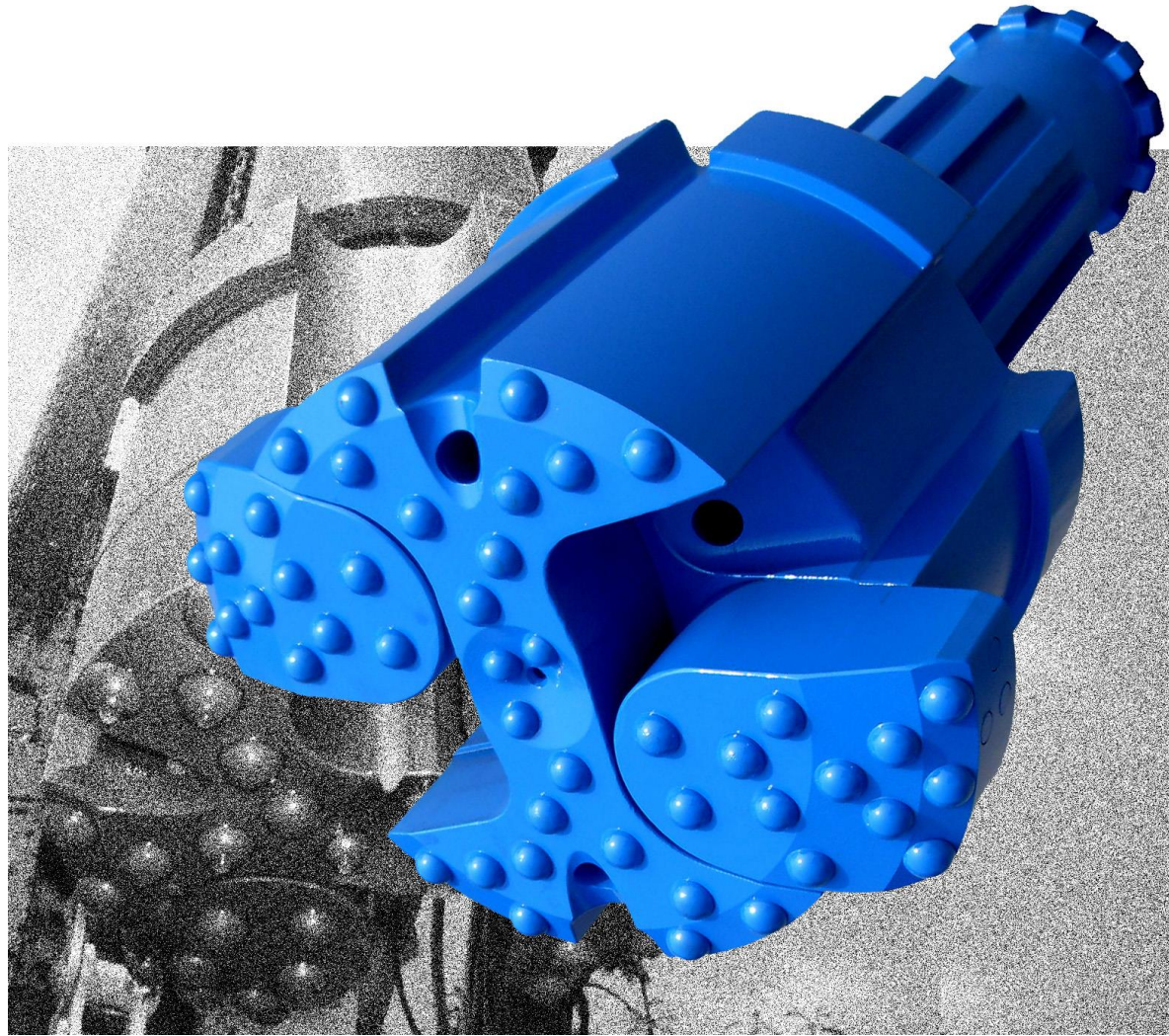


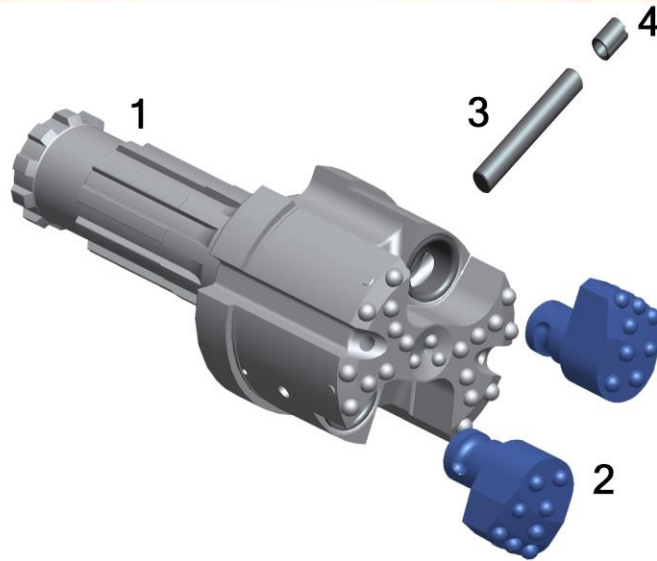
# PITUMEC

## THE PCON-E 278 CONCENTRIC UNDERREAMING SYSTEM



**CASING SIZE 323MM OD X 298MM ID DRILLING DIA. 345MM**

# PNEUMEC PCON-E 278 CONCENTRIC UNDERREAMING SYSTEM



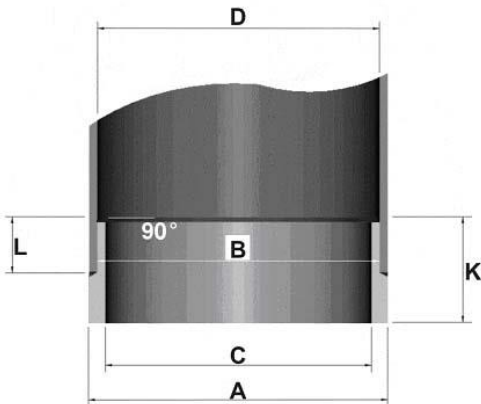
## PCON-E 278 PARTS LIST

1.	DRIVER BIT SD10 SHANK	UGD278S10PCE
2.	REAMER(2)	UBS280PCE
3.	LOCKING PIN	USP28050PCE
4.	SPLIT PIN	USP28051PCE
5.	COMPLETE SYSTEM	UCS278S10PCE

## PCON-E 278 SPECIFICATIONS

UPPER BODY DIAMETER	296MM	CLOSED DIAMETER	280MM
REAMING DIAMETER	345MM	CASING SIZE	323MM OD X 298MM ID
SYSTEM LENGTH	620MM	SYSTEM WEIGHT	170KG

## PCON-E 278 CASING SHOES



DIA. A	323MM
DIA. B	296MM
DIA. C	283MM
DIA. D	298MM
L	55MM
K	110MM



**PNEUMEC COMPANY LIMITED**

1st Floor, Tin On Sing Comm. Bldg., 41-43 Graham St. Central, H.K.

Tel : (852) 2280 9922

Fax : (852) 2280 9982

Website : [www.pneumec.com](http://www.pneumec.com)

email : [info@pneumec.com](mailto:info@pneumec.com)